

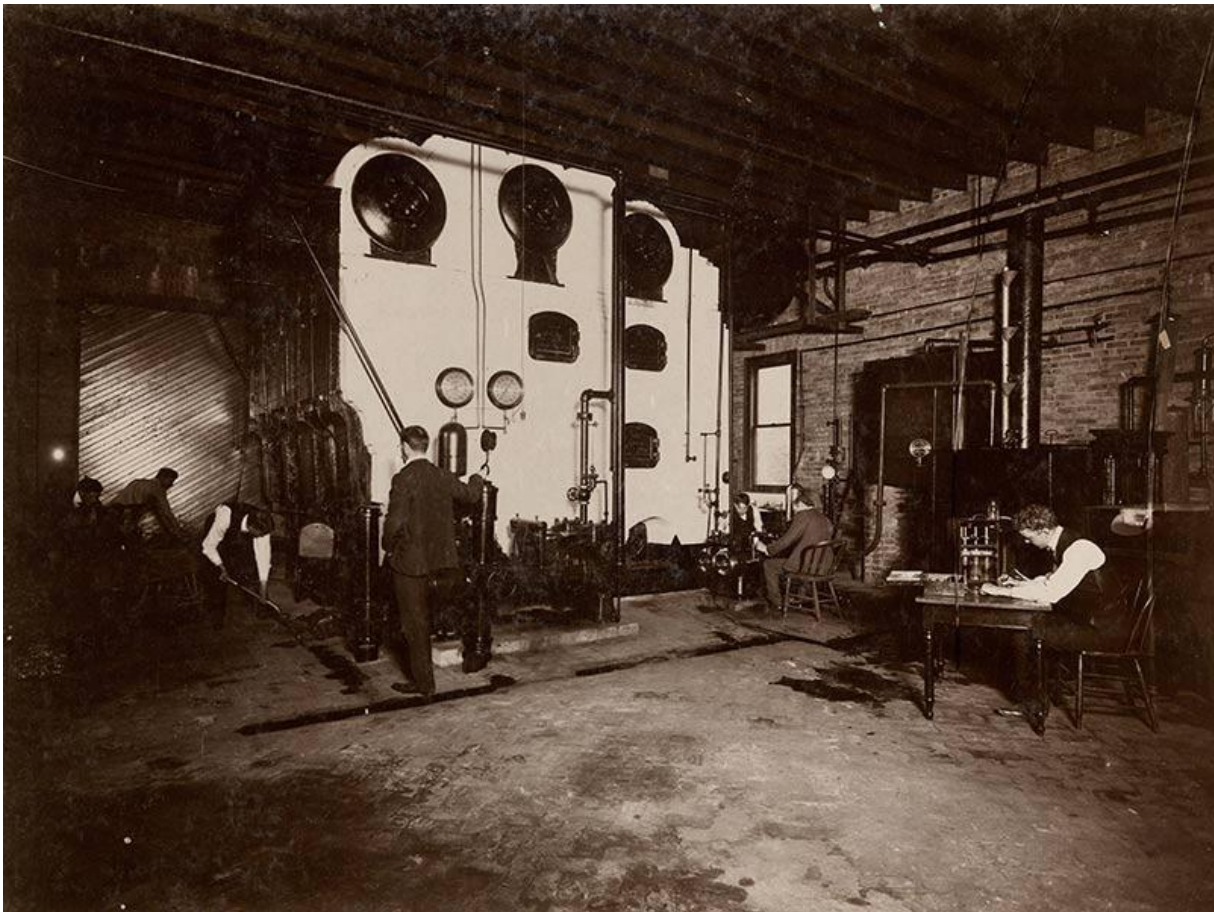
Feeding the machine

March 23rd, 2017

|

Photo from Tulane University Archives newwave@tulane.edu

[View PDF](#)



Tulane engineering students shovel coal in the boiler room of the Heat and Power Plant in the old engineering building, currently part of the School of Science and Engineering lab complex behind Blessey Hall as a part of the mechanic arts program circa 1900.